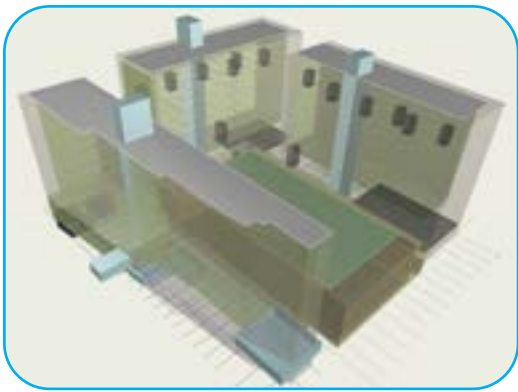


Portfolio : Jason E. Sachs
Professional & Personal Work
Travail Professionnelle & Personnel





Volumetric Concept Massing before application of the algorithmic generative design articulation tools

Social housing / Mixed use concept development: Lyon Confluence
Mass Timber construction and net zero energy objectives.
In consultation to Parisian housing architecture office, Client not divulged.



Plan RC





King Abdullah Financial District
Riyadh KSA
Mixed Use Tower 4.01
Tour à Usage Mixte 4.01
Project Architect With P+W



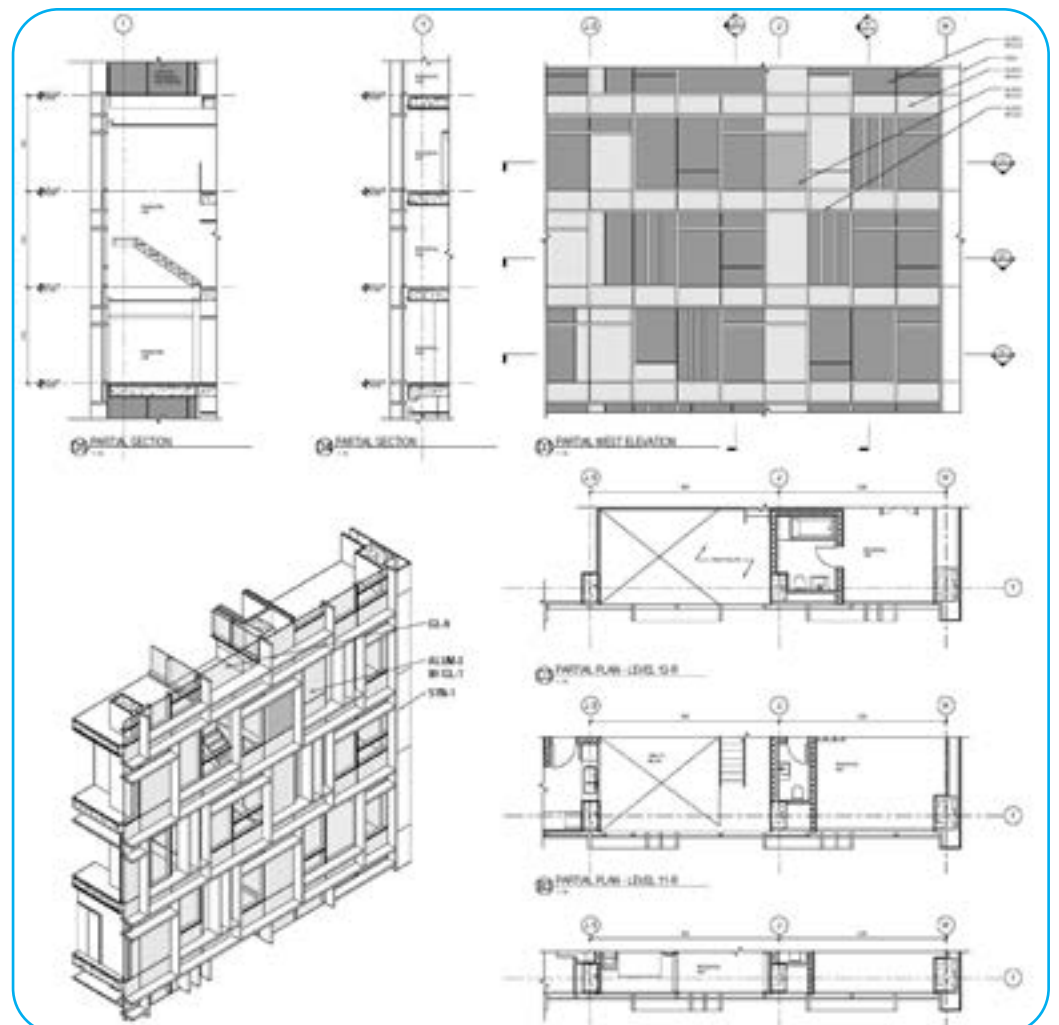
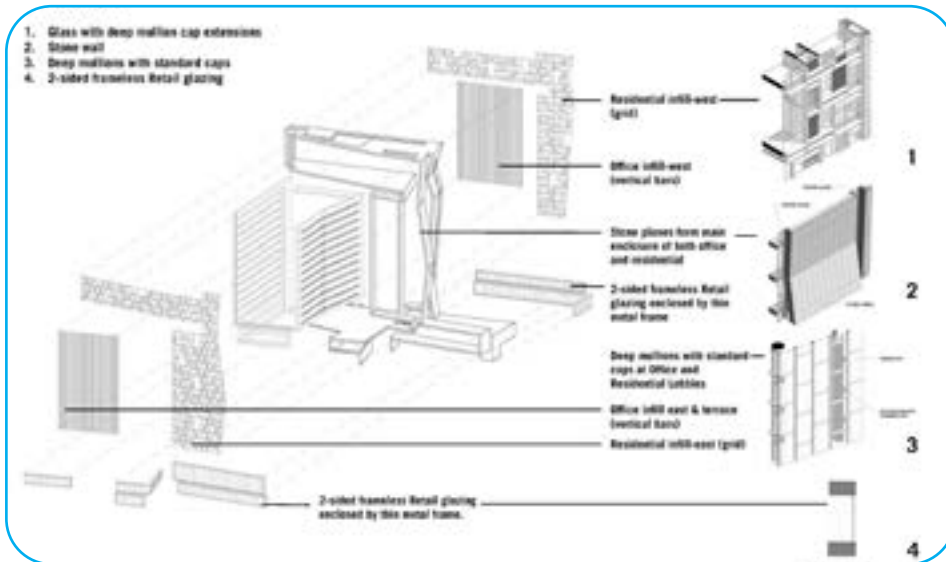
Towers

King Abdullah Financial District
Riyadh KSA
Mixed Use Tower 4.10
Tour à Usage Mixte 4.10
Project Architect With P+W



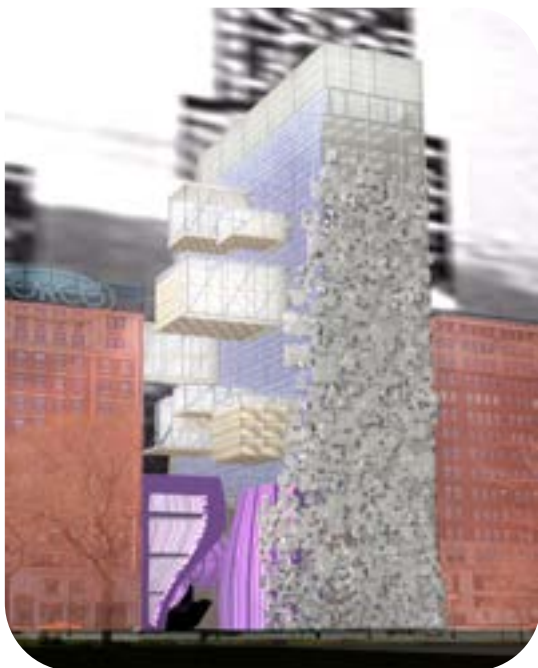
Godfrey Hotel, Chicago Illinois,
18 story hotel staggered steel truss structure
Project Architect With VDTA

Detail facade concepts
 King Abdullah Financial District
 Riyadh KSA Mixed Use Tower 4.10
 with P+W





The Chicago Spire, with Santiago Calatrava Architects,
2000ft (609M) 1200 Unit Residential Tower
Project Architect With P+W



Spertus Institute
Chicago Architecture Club finalist "Burnham Prize
Competition"
2002
with Julie Flohr



Parkside of Oldtown Building 2 & 16
Logements 107 appartements
Project Architect With LBBA



Housing



Amlı Lofts , Chicago Illinois
Logements deux bâtiments 800 appartements
Two buildings 11 stories, 800 units



The Chicago Spire, with Santiago Calatrava Architects,
2000ft (609M) 1200 Unit, Residential Tower
The Chicago Spire, avec Santiago Calatrava,
Logement 1200 résidences
Project Architect With P+W



King Abdullah Financial District, Building 4.10
Riyadh KSA
Mixed Use Tower, *Tour à Usage Mixte 4.10*
Project Architect With P+W



Archer Courts Renovation, Chicago Illinois
Logements Collectifs Sociaux
Project Architect With LBBA



Housing

1528 House - A contemporary private residence from a
112 year old shell, Chicago Illinois
Logement privé



King Abdullah Financial District, Building 4.0,
Riyadh KSA Mixed Use Tower, Residential Design,
Tour à Usage Mixte 4.01
Project Architect With P+W



Roseland Ridge New construction 4 building, 40 unit
townhouse development, Chicago Illinois
Logements collectifs sociaux,
4 bâtiments 40 appartements
Project Architect With LBBA



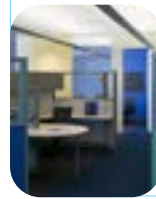
Evergreen Properties Milwaukee Avenue Mixed Use
Wicker Park, Chicago Illinois
36 unit residential / retail development
36 Logements / Vente au détail
Project Architect With Garofalo Architects



Ebay Park North, San Jose, California,
Building 17 Concept Design
Conception du Siège Social
Project Architect With VDTA



Workplace



Ebay building 14 -15, San Jose California,
Office renovations two buildings
*Rénovation intérieure pour deux plateaux
de bureaux*
Project Architect



Reliance R4G Headquarters, Mumbai India
With P+W

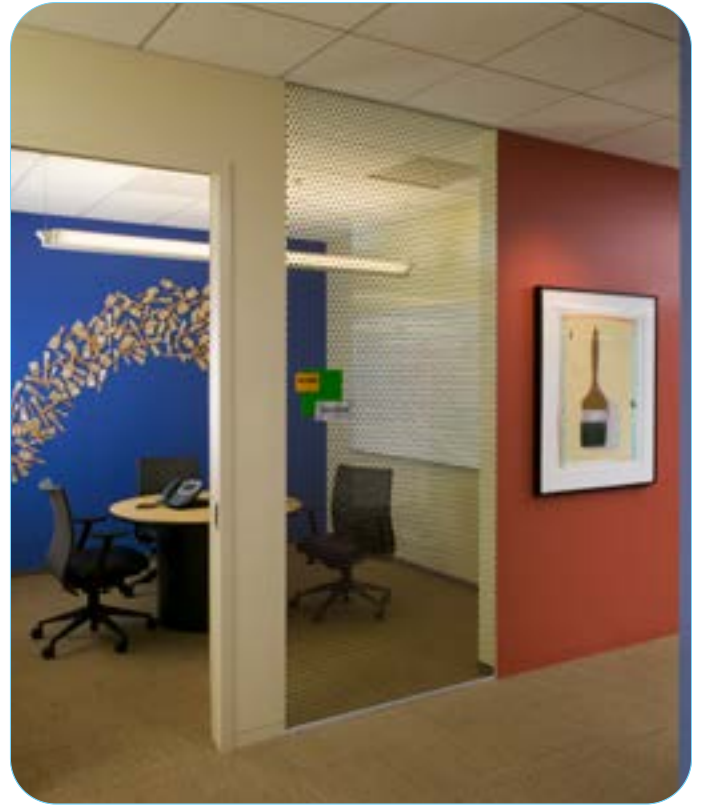


Reliance R4G Headquarters, Mumbai India
Campus Siege Corporate et Technique pour 4G Telecom,
Project Architect



Local 399 IUOE, Chicago Illinois, 50,000 SF Assembly
hall and Business center, New Mixed use Building
Project Architect With VDTA

Ebay building 14 -15, San Jose California,
Office renovations two buildings
*Rénovation intérieure pour deux plateaux
de bureaux*
Project Architect With VDTA





Princess Nourah Bint Abdul Rachman
University For Woman, Riyadh KSA
Master Planning,
Planification Urbaine
Project Architect With P+W
Largest women's university campus in the world.

Master Plan



Parkland College
Master Planning,
Planification Du Site
Project Architect With P+W



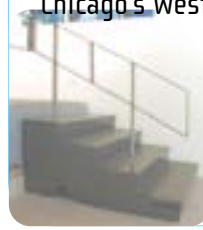
Ebay Park North, San Jose'
Building site Master Plan,
Planification Du Site
Project Architect With VDTA



Reliance R4G Headquarters, Mumbai India
Master Planning,
Planification Du Site
Project Architect With P+W



Julia Friedman Gallery: Design, fabrication and installation for a multimedia art gallery
Galerie d'art contemporain multimedia
 Chicago's West Loop district. 2001



Retail Restaurants Display + Exhibits



Uirapuru: A Telepresence media installation conceived by Eduardo Kac: Design, Fabrication, Technology Integration and Photography. An interactive environment for exhibition @ NTT Tokyo, Inter Communication Center, Biennale 1999 "Interaction" Tokyo, Japan



Sardine, Madison Wisconsin, 13,000 sf restaurant design construction, interior furnishings and design,
Sardine Restaurant
 Project Architect With VDTA



2001 Building for Space Travel
 Installation at the Art Institute of Chicago Museum; Exhibit Design and digital fabrication of exhibit fixtures.
Muséographie pour l'exposition à l'Art Institute of Chicago
 Project Architect With Garofalo Architects

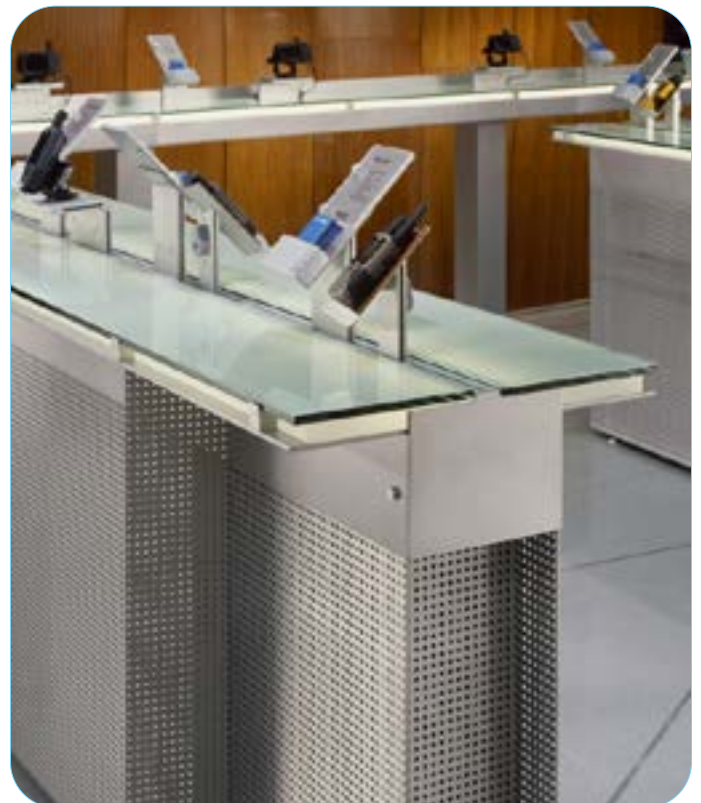


Garmin USA, Chicago Retail interior - Design of display fixtures, Digital Fabrication of interior wall structure.
Conception de l'exposition intérieure. Fabrication numérique de la structure murale intérieure. With VDTA



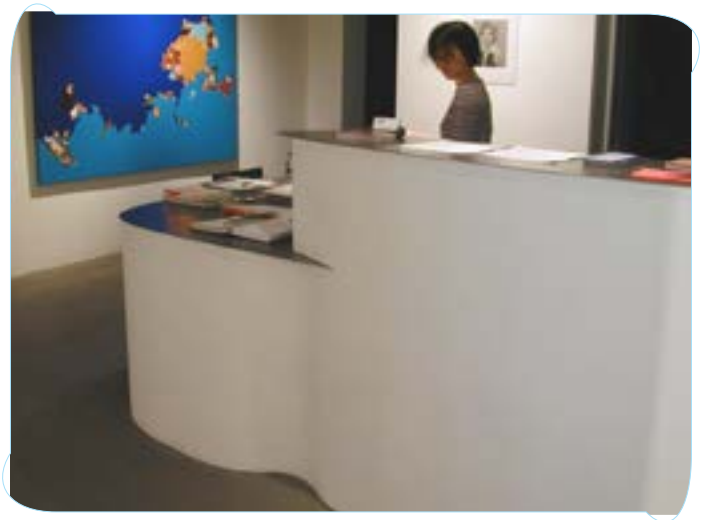


Garmin USA, Chicago Retail interior - Design of display fixtures, Digital Fabrication of interior wall structure.
Conception de l'exposition intérieure. Fabrication numérique de la structure murale intérieure. With VDTA





Julia Friedman Gallery: Design, fabrication and installation for a multimedia art gallery
Galerie d'art contemporain multimedia
Chicago's West Loop district. 2001





Princess Nourah Bint Abdul Rachman
University For Woman, Riyadh KSA
Academic Medical Center,
Centre Universitaire Hospitaliers
Project Architect With P+W



Academic

Flashpoint Media Arts Academy, Chicago Illinois
*Rénovation d'intérieur pour une école
du design multi-média,*
Project Architect With VDTA



Parkland College Campus Extension
Student Union
Champaign Urbana Il.
Design & Project Architect With P+W



Case Western Reserve
University Student
Union - Architectural
Interior Features
Design & Coordination



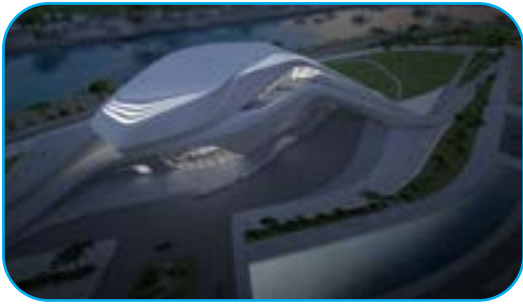
William Jones College Preparatory High School,
Chicago Illinois
Façade Design & Coordination ,
Conception Du Façade et Development Technique With P+W



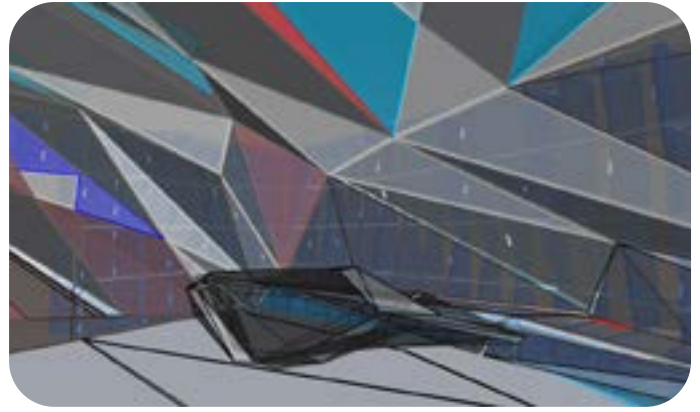
Round Rock Cedar Ridge High School, Round Rock Texas,
Lycée
Project Architect With P+W



Project Architect for
the construction of new
public school buildings,
Naperville, Illinois
With STR



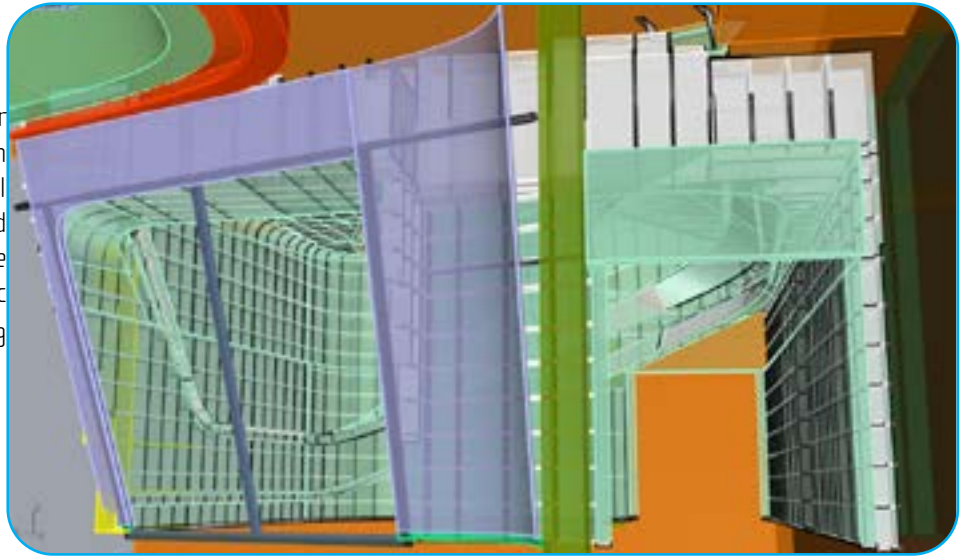
Grand Théâtre de Rabat de Zaha Hadid Architects



Detailed Fabrication : Modeling

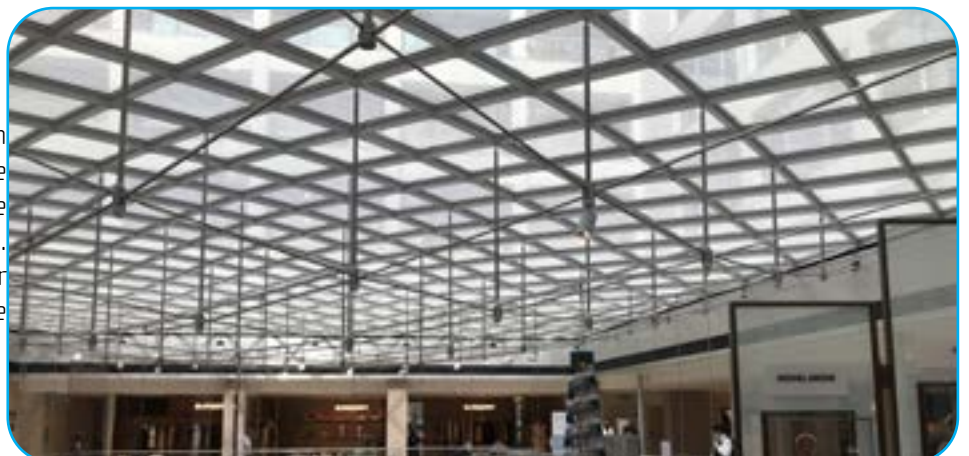
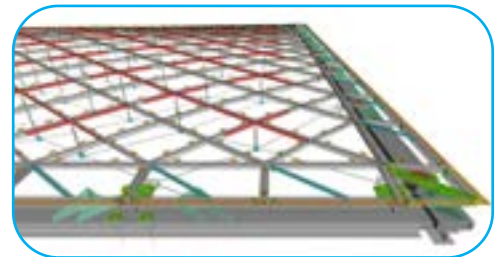
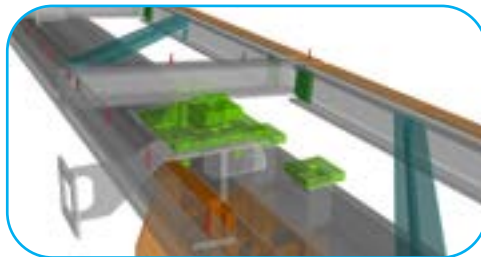
Zaha Hadid / SANAA

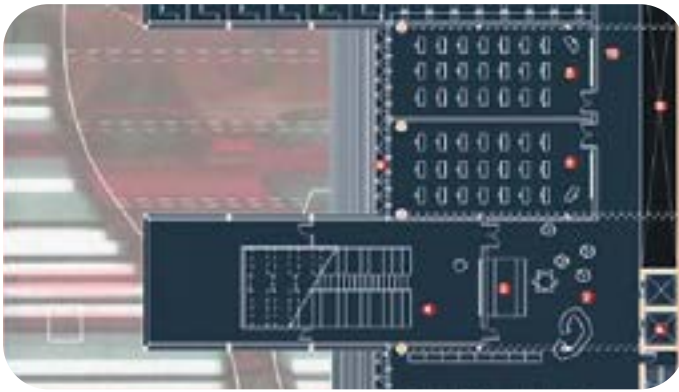
Detailed modeling for interior finished constructions: preparation of all components for direct digital machining. Project of Zaha Hadid Architects "Théâtre National De Maroc" In consultation to Aurblanc Lyon, FR. 2019



Renovation of La Samaritaine Paris
SANAA Architects

The detail modeling and translation to digital fabrication of all of the elements for the structure of double curved glass roof systems. In consultation to Bollinger Grohmann Engineers, Paris Office





Spertus Institute
Chicago Architecture Club
Finalist "Burnham Prize
Competition"
2002
with Julie Flohr

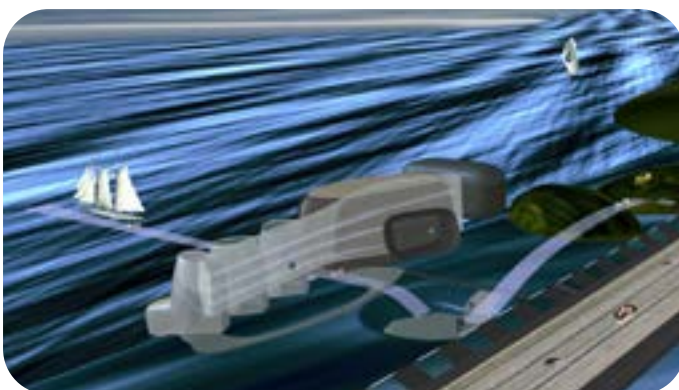
Competitions



Amstel Bridge Competition
Concours Amstel Bridge
2012



Invisible Cities: "Chicago
Architecture Foundation" Urban
Concept District Design,
Planification Conceptoin Urbaine
with Brininstool & Lynch
Architects, Chicago. 2003



Afsluitdijk World Sustainability Centre Competition,
Concours 2009



- water culture park
- pump house
- pump line / entry tunnel
- road bridge
- parking
- land approach bridge
- boats
- submerged plaza
- belows residence
- sub surface research hall / thalys post research esp
- solar thermal generator / pedestrian circulation
- Devalde research bays (three)
- hydro-fur line barge
- exhibition hall / auditorium
- sea approach bridge